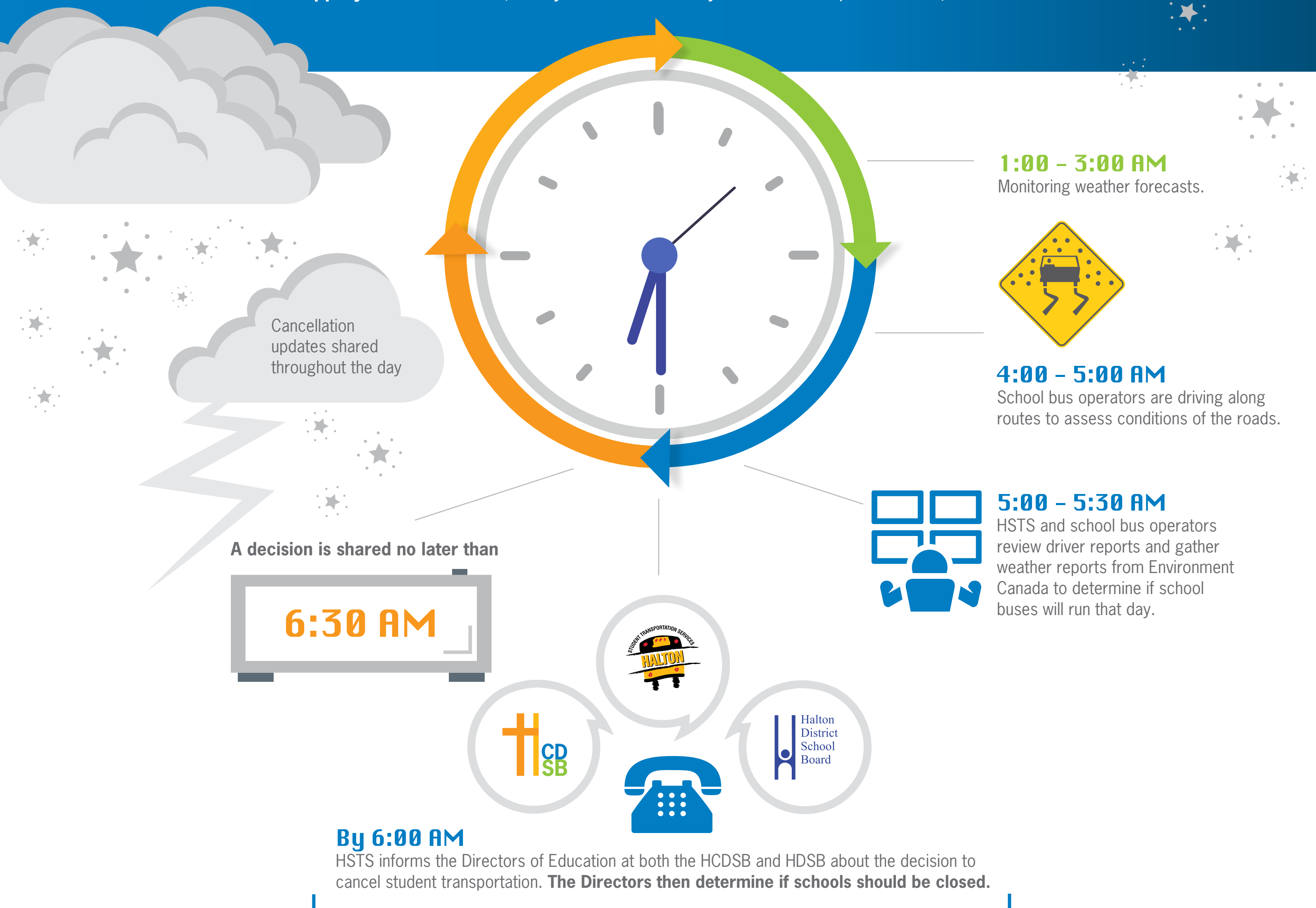


INCLEMENT WEATHER

BUS CANCELLATIONS AND SCHOOL CLOSURES



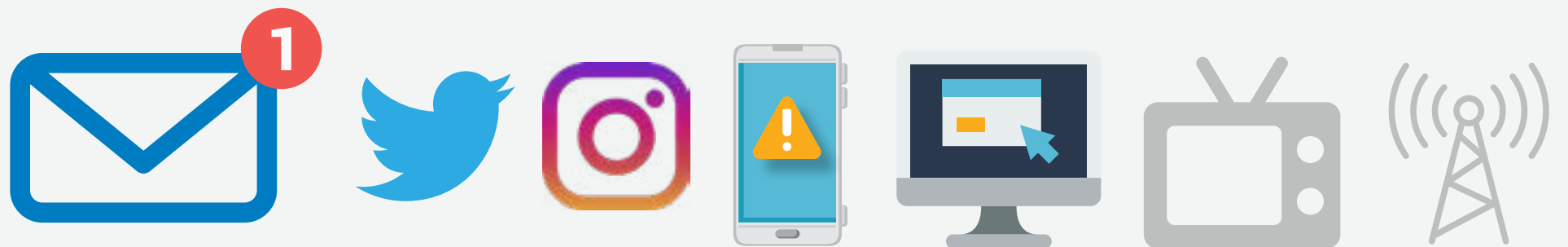
When **weather conditions are severe** or forecast is calling for an **extreme amount of snow or slippery road conditions**, it may become necessary to cancel transportation and/or close schools.



How are Decisions to Cancel Transportation and Close Schools Communicated?

Transportation Cancellations:

- Email to parents
- On Twitter and Instagram
- Website: www.hcdsb.org
- School websites
- *TV and radio stations



Tv Stations:

CHTV (Morning Show), CITY TV (Breakfast Television), CP 24

FM Radio Stations:

CHFI 98.1 FM, WAVE 94.7 FM, Y108/107.9 FM, 95.3 FRESH FM, 102.9 KLITE FM, CBC/CBLT 99.1 FM, CIMJ 106.1 FM

AM Radio Stations:

CFRB 1010 AM, CHML 900 AM, CKOC 1150 AM, CJOY 1460AM, ZOOMER RADIO AM 740, AM 680NEWS

What if the Weather Conditions Deteriorate During the School Day?

- Throughout the day, we continue to monitor the weather and share updates on program cancellations as they are determined.
- When weather deteriorates during the day while students are at school, transportation services will maintain their regular schedule.
- The Directors of Education may decide to send students home early, in consultation with HSTS.
- If this becomes necessary, schools will dismiss students in accordance with the direction provided by parents on the Family Information Package - School Emergency Closure.

More Information:

- [HCDSB Procedure — Inclement Weather - Transportation Cancellations & Emergency Closures VI - 47](#)
- [HSTS Procedure — HS-4-006 Inclement Weather Transportation Cancellations](#)
- [HSTS Procedure — HS-4-007 - School Closure](#)



www.hcdsb.org www.haltonbus.ca