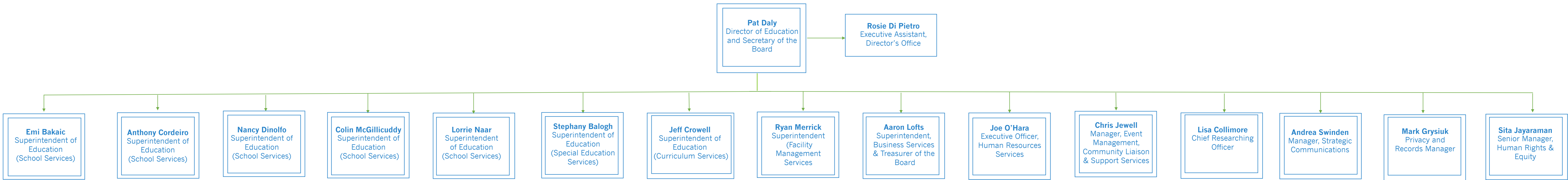


Board-wide Organizational Chart

Effective December 2020

BOARD OF TRUSTEES

BURLINGTON Brenda Agnew Vincent Iantomasi Tim O'Brien	HALTON HILLS Janet O'Hearn-Czarnota	MILTON Marvin Duarte (Vice-Chair) Patrick Murphy (Chair)	OAKVILLE Peter DeRosa Nancy Guzzo Helena Karabela
---	---	--	---



- | | | | | | | | | | | | | | | |
|--|--|--|---|---|---|--|--|--|--|--|--|--|--|--|
| <ul style="list-style-type: none"> St. Francis Xavier CSS Guardian Angels CES Lumen Christi CES Our Lady of Fatima CES Queen of Heaven CES St. Benedict CES St. Scholastica CES | <ul style="list-style-type: none"> Christ the King CSS Holy Cross CES St. Brigid CES St. Catherine of Alexandria CES St. Francis Assisi CES St. Joseph (Acton) CES | <ul style="list-style-type: none"> Assumption CSS Ascension CES Holy Rosary (Burlington) CES St. John (Burlington) CES St. Patrick CES St. Paul CES St. Raphael CES | <ul style="list-style-type: none"> Corpus Christi CSS Sacred Heart of Jesus CES St. Anne CES St. Christopher CES St. Elizabeth Seton CES Thomas Merton Adult and Continuing Education | <ul style="list-style-type: none"> Bishop P.F Reding CSS Holy Rosary (Milton) CES Our Lady of Victory CES St. Anthony of Padua CES St. Peter CES | <ul style="list-style-type: none"> St. Ignatius of Loyola CSS St. Bernadette CES St. Gregory the Great CES St. Joan of Arc CES St. John Paul II CES St. Mary CES St. Matthew CES St. Teresa of Calcutta CES | <ul style="list-style-type: none"> St. Thomas Aquinas CSS St. Dominic CES St. Luke CES St. Nicholas CES St. Vincent CES | <ul style="list-style-type: none"> Holy Trinity CSS Holy Family CES Our Lady of Peace CES St. Andrew CES St. Marguerite d'Youville CES St. Michael CES | <ul style="list-style-type: none"> Notre Dame CSS Canadian Martyrs CES St. Gabriel CES St. Mark CES St. Timothy CES | | | | | | |
|--|--|--|---|---|---|--|--|--|--|--|--|--|--|--|